



MANUAL CHANGES

MODEL 5245L

ELECTRONIC COUNTER

Manual Serial Prefixed: 408-

Manual Printed: MAR 1964

MAKE ALL CORRECTIONS IN THIS MANUAL ACCORDING TO ERRATA BELOW, THEN CHECK THE FOLLOWING TABLE FOR YOUR INSTRUMENT SERIAL PREFIX (3 DIGITS) OR SERIAL NUMBER (8 DIGITS) AND MAKE ANY LISTED CHANGE(S) IN THE MANUAL.

► NEW ITEM.

SERIAL PREFIX OR NUMBER	MAKE MANUAL CHANGES	SERIAL PREFIX OR NUMBER	MAKE MANUAL CHANGES
425-	1		
429-	1, 2		
430-	1, 2, 3		
442-	1, 2, 3, 4		

Figure 5-35, Table 6-1,

Change: A25Q4 to 2N2043; Ⓢ Stock No. 1850-0092. Recommended replacement for all 5243A-65T assemblies.

Table 6-1,

Delete: MP39 Bracket; Transformer 5243A-12A.

Paragraph 5-18 should be corrected to read as follows:

e. Adjust A19R7 until correct count appears. Alternately decrease the output of the oscillator and adjust A19R7 until maximum sensitivity is obtained.

f. Vary frequency below 50 Mc. Correct count should be obtained over the frequency range with a signal input of 100 mv.

Add: h. The above procedure adjusts the counter for maximum sine wave operation. For pulse operation the sensitivity must be readjusted for maximum performance with either positive or negative pulses.

i. For negative pulse operation, adjust sensitivity by turning A19R7 in a clockwise direction.

j. For positive pulse operation, adjust sensitivity by turning A19R7 in a counterclockwise direction.

Paragraph 5-28 a.

Change last line to read as follows: "...to PERIOD or FREQUENCY."

Paragraphs 5-28 c, and 5-29 c.,

Change 20 Mc to 50 Mc.

Figure 5-5:

Correct Figure 5-5 as shown in Figure 1.

Figure 5-29:

Change "GATED SIG TO A17 (2)" to "A17(13)".

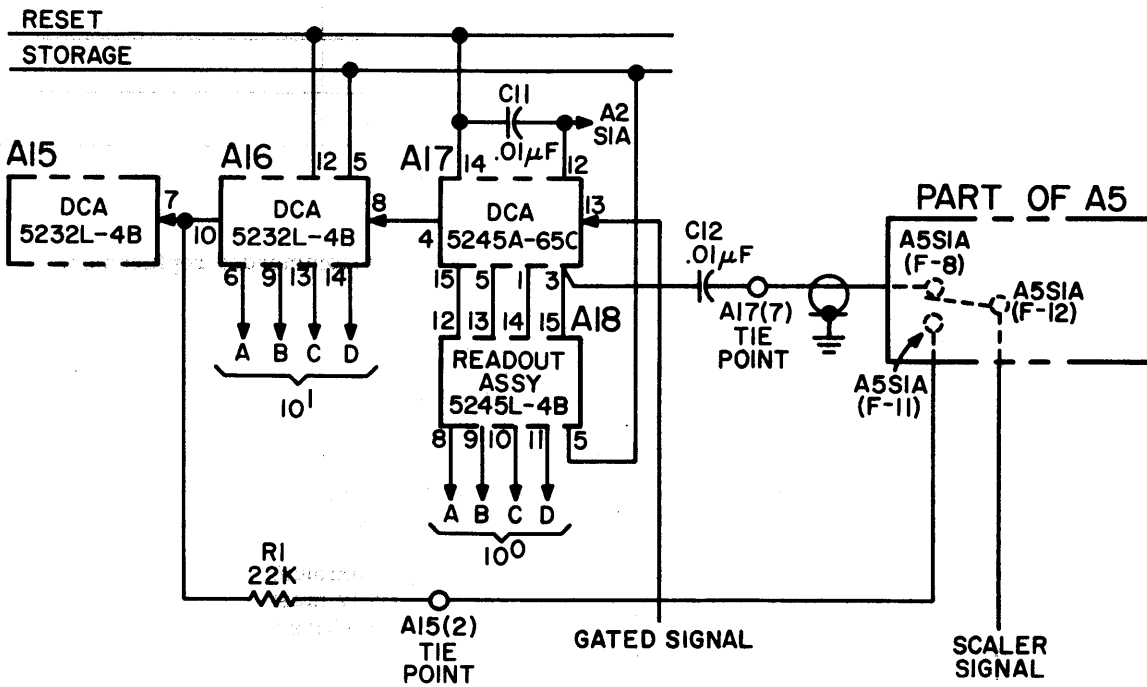
Table 6-1:

Add: A8DS2 through DS9 2140-0028.

Change: A21T1 to 9130-0035.

ERRATA
(Cont'd)

- ▶ Table 1-1, Page 1-2,
Under TIME BASE change the following:
Aging rate-less than 3 parts in 10^9 per 24 hrs**.
Short term-less than 2 parts in 10^{10} RMS.
- ▶ Table 5-6, Page 5-7,
Under Line Voltage 115 change the following:
-130 $\pm 10\%$.
+170 $\pm 10\%$.
- ▶ Figure 5-5, Page 5-11,
A21 stock number should be 5245A-65K.
- ▶ Figure II A-3, Table II A-3,
Change C2 to 140 pf, ϕ Part No. 0140-0217



CHANGE 1

Figure 5-15, Table 6-1,
Change: A7CR2 to 1902-0214.
Table 6-1,

Delete: MP52	5243L-17A
MP52, 55	5243L-37A
MP58, 59	5243L-74A
MP63, 64	5243L-83D
MP66	5243L-91A
MP69, 70	5243L-109A
MP74-	5245L-2A

Change MP53 to 05243-2018

Add: 05243-0006 Retainer-Front Plate	1 Each
05243-0007 Retainer-Latch	1 Each
05243-2013 Pawl	1 Each
05243-2014 Shaft-Latch	1 Each
05243-2015 Knob	1 Each
05245-2005 Panel-Front	1 Each

CHANGE 2

Figure 5-44, Tables 6-1, 6-2,
Delete J9 and J10, $\text{\textcircled{P}}$ Stock No. 1251-0085, and all associated wiring.
(Remote control circuitry is available by special order.)

Table 6-1, 6-2,
Change MP75 Rear Panel to $\text{\textcircled{P}}$ Stock No. 05243-2007.

CHANGE 3

Figure 5-23, Table 6-1,
Change A17Q9 to $\text{\textcircled{P}}$ Stock No. 1850-0163.
Figure 5-32, Table 6-1,
Delete: C10 1000 pf $\text{\textcircled{P}}$ Stock No. 0140-0152.
Add: C11 390 pf $\text{\textcircled{P}}$ Stock No. 0140-0200.
Add: C12, 13 .1 μf $\text{\textcircled{P}}$ Stock No. 0150-0121.
Add: R36 470 ohms $\text{\textcircled{P}}$ Stock No. 0686-4715.
See schematic below.

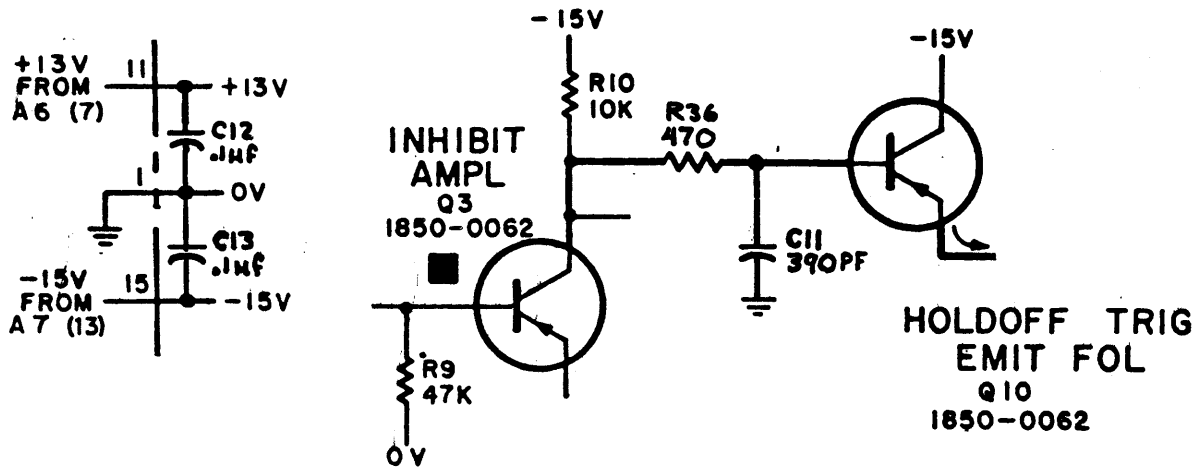


Table 6-1,
Change: A19R3 to $\text{\textcircled{P}}$ Stock No. 0757-0917.
Change: A19R2 to $\text{\textcircled{P}}$ Stock No. 0757-0953.
Change: A19R12 to $\text{\textcircled{P}}$ Stock No. 0757-0955.

CHANGE 4

- Figure 5-15, Tables 6-1, 6-2,
Add: A6C2, 3 .01 μf , $\text{\textcircled{P}}$ Stock No. 0170-0017.
Add: A6C1, 4 .047 μf , $\text{\textcircled{P}}$ Stock No. 0170-0040.
Connect as follows:
A6C1 between pin A and pin 2.
A6C2 between pin 8 and pin 14.
A6C3 between pin 8 and pin 13.
A6C4 between pin 5 and pin 6.